

Advanced Optical Fiber Cleaver

# CT110/111

Automatic cleaving with high quality



CT110

CT111  
(with Angled-Cleaving Function)

**Cleaving tension  
automatic setting**

**Blade position  
automatic changing**

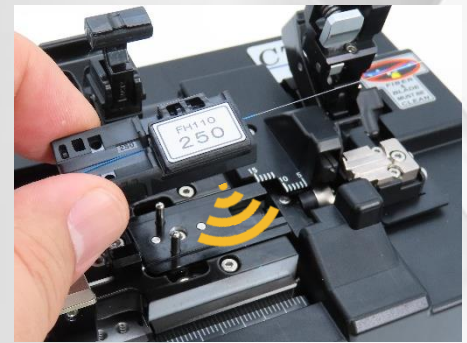
**Wireless communication  
By RFID**



Automatic cleaving tension function can tension and can save your optimization.



A new blade mechanism controls blade height automatically. It keeps good blade condition to obtain stable cleaving quality.

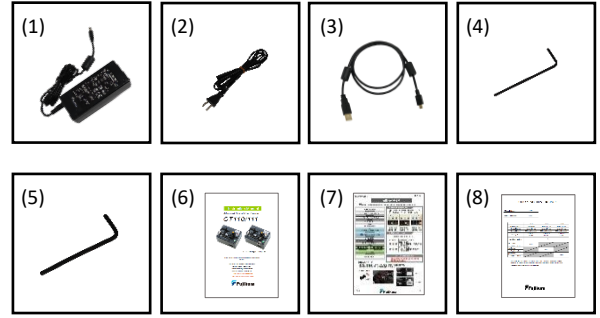


RFID tag equipped to the fiber holder communicate with CT110/CT111 and choose proper cleaving program(\*1)

(\*1) It is necessary to set the fiber holder to be used and the cleaving program to the in advance using the attached PC software.

## Standard Package

Item	Model	Qty
Advanced Optical Fiber Cleaver	CT110 , CT111	1 pc
(1) AC Adapter	ADC-21	1 pc
(2) AC Power Cord	ACC-08, 09, 10, 11 or 12	1 pc
(3) USB Cable	USB-01	1 pc
(4) Hexagonal Wrench	HEX-01	1 pc
(5) Hexagonal Wrench	HEX-02	1 pc
(6) Instruction Manual	-	PDF file stored in Cleaver
(7) Quick Reference Guide	QRG-11-E or J	1 pc
(8) Cleave test report	CR-CT110	1 pc



## Specifications

Item		Specification	
Model		CT110	CT111
Applicable fiber	Fiber type	Silica fiber	
	Fiber count	Single fiber	
	Cladding dia.	80 to 250µm	
	Coating dia.	81 to 2,000µm	
Applicable fiber holder		FH-100 series / FH110 series / FH-70 series *1	
Capability of setting range for tension*2		0 to 900gf	
Total fiber length*3		Approx. 11~44mm	
Cleave angle *4		Avg 0.3°, Cladding dia. 125µm	
Fiber twister	-	Equipped	
Angled Cleaving	-	Approx. 0° to 15° *5	
Blade life		Approx. 200,000 fiber Cleaves at Cladding dia. 250µm *6	
Physical description	Dimensions W	Approx. 140mm without projection	
	Dimensions D	Approx. 106mm without projection	
	Dimensions H	Approx. 103.5mm without projection	
	Weight	Approx. 810g without battery	Approx. 850g without battery
Power supply	AC adaptor	Input : AC100 to 240V, 50/60Hz, Max. 1.5A Output : Approx. DC 19V, Max. 2.1A	
	Battery	4 pieces of dry battery (ANSI AA / IEC LR6) Number of cleaving with battery: Approx. 500 fiber cleaves with standard 125µm at 25°C.	
Interface	PC	USB2.0 Mini B type *7	
	Ground point	Applicable by M3 size truss screw.	
Wireless communication	RFID	Compliant with ISO 15693 *7	
Firmware	Cleave mode	10 Cleave modes can be saved in the device.	
		3 Cleave mode can be selected by the switch in the device.	
Environmental condition	Temperature	Operate : 0 to 40 °C	
		Storage : -40 to 80 °C	
	Humidity	Operate : 0 to 95%RH non-condensing	
Storage : 0 to 95%RH non-condensing			
Other Features	Automatic functions	Auto cleave mode select by RFID tag	
		Motorized blade position change	
		Motorized auto tension setting	
	Coating adjuster	Coating position adjustment mechanism after cleaving *8	
Software for PC	Firmware update via internet		
	Cleaving parameter upload and download		

## Options

Item	Model	Remark
Blade for Replacement	CB-06A	Blade for Replacement
Holder Adapter Plate	AD-CT110-FH70	Fiber Holder Adapter for FH-70
Fiber Holder	FH110-60	60µm Coating Diameter
	FH110-100	100µm Coating Diameter
	FH110-125	125µm Coating Diameter
	FH110-150	150µm Coating Diameter
	FH110-180	180µm Coating Diameter
	FH110-210	210µm Coating Diameter
	FH110-250	250µm Coating Diameter
	FH110-300	300µm Coating Diameter
	FH110-350	350µm Coating Diameter
	FH110-400	400µm Coating Diameter
	FH110-500	500µm Coating Diameter
	FH110-600	600µm Coating Diameter
	FH110-700	700µm Coating Diameter
	FH110-800	800µm Coating Diameter
	FH110-900	900µm Coating Diameter
	FH110-1000	1000µm Coating Diameter
	FH110-1100	1100µm Coating Diameter
	FH110-1200	1200µm Coating Diameter
	FH110-1300	1300µm Coating Diameter
	FH110-1400	1400µm Coating Diameter
FH110-1500	1500µm Coating Diameter	
FH110-1600	1600µm Coating Diameter	
FH110-1700	1700µm Coating Diameter	
FH110-1800	1800µm Coating Diameter	
FH110-1900	1900µm Coating Diameter	
FH110-2000	2000µm Coating Diameter	

### Note

- \*1 Holder Adapter Plate (AD-CT110-FH70) is necessary to use FH-70 series.
- \*2 There are some cases that the set tension is different from the actual tension.
- \*3 Cleave length means distance between end surface of the fiber holder edge and end surface of the cleaved fiber.
- \*4 Measured with an interferometer at room temperature, not with a splicer.  
The average cleave angle changes depending on the environmental conditions, blade condition, operating method, and cleanliness.
- \*5 Maximum cleaved angle changes depending on the fiber type cleaved and clamp position.
- \*6 Support 10,000 cleaves per position at cladding dia. 250µm.  
20pos. X 10,000 cleaves = 200,000 cleaves  
The blade life changes depending on the environmental conditions, operating method, and the fiber type cleaved.
- \*7 Unavailable with battery.
- \*8 Supported Cladding dia. is 81 to 900µm.



**BEST QUALITY SERVICE**  
- SINCE 1978 -

Please visit our web site!

<https://www.optic-product.fujikura.com/>

## Fujikura Ltd.

1-5-1, Kiba, Koto-ku, Tokyo 135-8512, Japan  
General inquiries, : +81-3-5606-1164 Service & support : +81-43-484-3962 <https://www.fujikura.com>

## Fujikura Asia Ltd.

438A Alexandra Road, Block A Alexandra Technopark #08-03 Singapore 119967  
General inquiries, Service & support : +65-6-278-8955 <https://www.fujikura.com.sg>

## Fujikura Europe Ltd.

C51 Barwell Business Park, Leatherhead Road, Chessington, Surrey, KT9 2NY, UK  
General inquiries, : +44-20-8240-2000, Service & support : +44-20-8240-2020 <https://www.fujikura.co.uk>

## AFL

110 Hidden Lake Circle Duncan, SC 29334, USA  
General inquiries, : +1-800-235-3423 Service & support : +1-800-866-3602 <https://www.aflglobal.com>

## Fujikura (China) Co., Ltd.

7th Floor, Shanghai Hang Seng Bank Tower, 1000 Lujiazui Ring Road, Pudong New Area, Shanghai 200120, CHINA  
General inquiries, Service & support : +86-21-6841-3636 <http://www.fujikura.com.cn>